

ARP 75C

LIGHT TANDEM VIBRATORY ROLLER

EU STAGE V / U.S. EPA TIER 4 FINAL

APPLICATIONS

- Medium and large compaction projects
- Transport construction: highways, municipal roads, airfields
- Industrial zones
- Parking areas
- Downtowns



PRODUCTIVITY

Variable compaction output

Two-stage vibratory system enables adjustment to the particular jobsite.

Smooth rolling

Advanced drive system prevents sudden starts and stops during machine operation.

ERGONOMICS

Platform and cab

Spacious and quiet, with 360° visibility.

Operator station

Provides high comfort and safety.

SERVICEABILITY

Minimized downtime

Heavy duty components and robust construction.

Reduced maintenance

Extended service intervals; easy-to-reach maintenance points.

SUSTAINABILITY

ECOdrops

Improved efficiency, reduced use of fluids.

Advanced technologies

Including monitoring and measuring systems, enhance efficiency, productivity, and enable precise documentation.

OPTIONAL EQUIPMENT

- Battery disconnection switch - Mechanical
- A/C
- Additional documentation printed
- Additional lights 360° LED for combi
- Additional lights cab LED
- Ammann Documentation Syst. ADS
- Ammann Documentation Syst. ADS RTK
- AmmannCare Gold
- AmmannCare Silver
- Back-up alarm
- Back-up alarm adaptive
- Certificate of origin
- Color scheme customer
- Compaction measuring system ACE^{force}
- Compaction measuring system ACE^{pro}
- Cooling box
- Drum steps foldable rear
- Edge cutter 45° (rear left)
- Engine automatic stop
- Fire extinguisher
- GPS Q-Compaction ACE
- GPS Q-Compaction Preparation
- GPS Q-Compaction Preparation ACE
- Hydraulic oil biodegradable
- Infrared thermometer
- Maintenance Kit 1000h
- Maintenance Kit 2000h
- Maintenance Kit 500h
- Radio DAB
- Rear view camera
- Registration plate holder incl. light
- Slow moving vehicle triangle
- Sun films on cab glasses
- Sun visor
- Telematics Preparation
- Telematics ServiceLink Plus
- Toolset
- Transport remote control
- Warning beacon green LED
- Warning beacon LED
- Water tank filling from ground

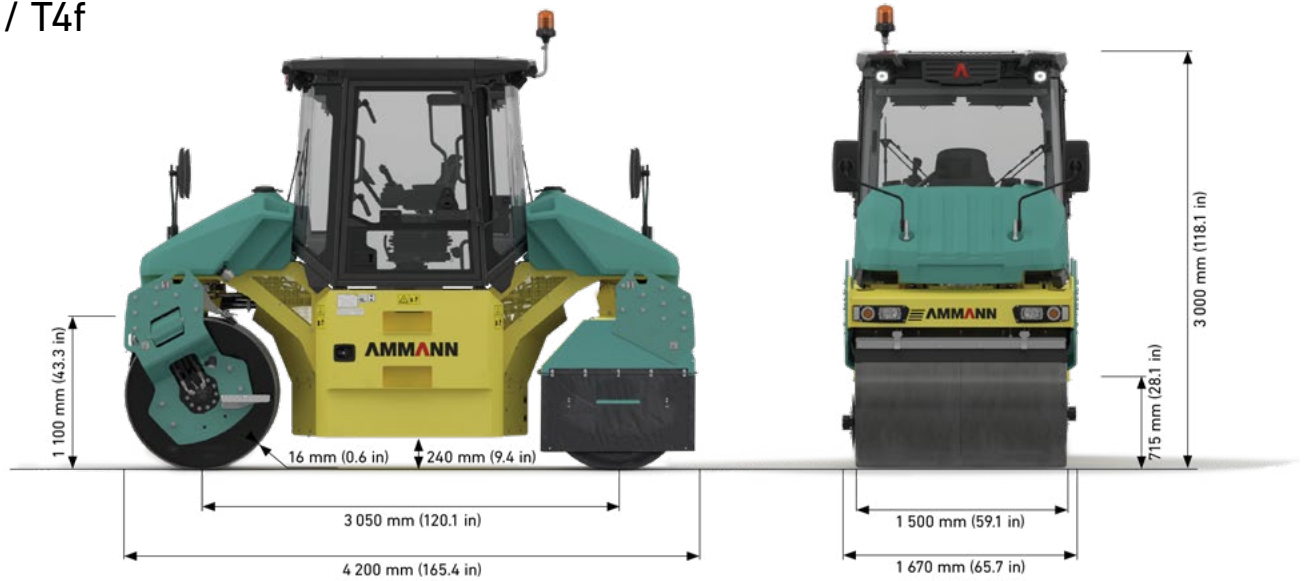
STANDARD EQUIPMENT

- 2 amplitudes / Multiple frequencies
- Ammann color design and decals
- ATC - Ammann Traction Control
- Battery disconnection switch - Electronic
- Cab ROPS/FOPS
- Centralized draining points
- Combi-version: Front and rear drive and rear vibration
- Combi-version: Incl. emulsion-spraying and thermal aprons
- Combi-version: one split drum / 4 tyres in front
- ECDrop
- Electronic drive lever with intelligent functions
- FTS (Finger-Tip-Steering)
- Measuring points central
- Multi-functional 10inch touchable display for machine control and overview
- On-board diagnostics
- Operator's station with one drive lever (RH)
- Pressure water sprinkling with interval switch, 3 stage filtration and 2 pumps
- Road lights (headlights, rearlights, turning signals, brake lights)
- Slideable, 270° rotatable and horizontally adjustable driver's seat with armrests
- Standard hydraulic oil
- Tilttable scrapers
- Variable working width (Off-set steering modes)
- CE conformity
- Telematics Readiness

AMMANN

ARP 75C

StV / T4f



WEIGHT & OPERATING CHARACTERISTICS

OPERATING WEIGHT CECE	7 360 kg (16,226 lb)
OPERATING WEIGHT MAX.	8 670 kg (19,114 lb)
STATIC LINEAR LOAD AVG.	23,6 kg/cm (132.2 lb/in)
MAX. WORKING SPEED	10 km/h (6.2 MPH)
GRADEABILITY WITHOUT VIBRATION	30%
GRADEABILITY WITH VIBRATION	25%
TURNING RADIUS (INNER)	2 940 mm (115.7 in)
DRUM OFFSET	1 220 mm (48 in)

ENGINE

MANUFACTURER	Kubota
ENGINE TYPE	V3307-CR-T
ENGINE SPEED	2400 rpm
POWER OUTPUT SAE J1995	55,4 kW / 74HP
EMISSION STAGE	EU Stage V / U.S. EPA Tier 4 Final
EXHAUST GAS AFTER-TREATMENT	EGR+DOC+DPF

COMPACTION FORCES

FREQUENCY I	38–48 Hz (2,280–2,880 vpm)
FREQUENCY II	45–55 Hz (2,700–3,300 vpm)
CENTRIFUGAL FORCE I	58–92 kN (13,039–20,682 lbf)
CENTRIFUGAL FORCE II	47–70 kN (10,566–15,737 lbf)
AMPLITUDE I	0,68 mm (0.027 in)
AMPLITUDE II	0,39 mm (0.015 in)

MISCELLANEOUS

BRAKES OPERATING	Hydrostatic
BRAKES PARKING	Multiple-disc spring brake
BRAKES EMERGENCY	Multiple-disc spring brake
FUEL TANK CAPACITY	160 l (42.3 gal)
WATER TANK CAPACITY	900 l (237.8 gal)
TYPE OF WATERING	Pressure
HYDRAULIC TANK CAPACITY	84 l (22.2 gal)
STEERING ANGLE	±24°
OSCILLATION ANGLE	±4°
BATTERY VOLTAGE	12V
BATTERY CAPACITY	120 Ah
NUMBER OF WHEELS	4 psc
SIZE OF TIRES	11,00x20,00 16PR
WHEEL LOAD	885 kg (1,951 lb)

MAXIMUM RECOMMENDED COMPACTED LIFT THICKNESS AT OPTIMAL WORKING CONDITIONS

ROCKFILL	–
SAND / GRAVEL	350 mm (13.8 in)
MIXED SOILS	250 mm (9.8 in)
SILT	–
CLAY	–
STABILISATION	180 mm (7.1 in)
ASPHALT	130 mm (5.1 in)